

DEFAULT DOCKET LIST, 4/26/2012

EXHIBIT 6

Docket	Applicant	Status	Request
117-2012	Fidelity Exploration & Production Co.	Default	Temp. Spacing
118-2012	Fidelity Exploration & Production Co.	Default	Temp. Spacing
119-2012	Fidelity Exploration & Production Co.	Default	Temp. Spacing
120-2012	Fidelity Exploration & Production Co.	Default	Temp. Spacing
121-2012	Fidelity Exploration & Production Co.	Default	Temp. Spacing
123-2012	Fidelity Exploration & Production Co.	Default	Temp. Spacing
124-2012	Fidelity Exploration & Production Co.	Default	Temp. Spacing
125-2012	Fidelity Exploration & Production Co.	Default	Temp. Spacing
126-2012	Fidelity Exploration & Production Co.	Default	Temp. Spacing
127-2012	Fidelity Exploration & Production Co.	Default	Temp. Spacing
128-2012	Fidelity Exploration & Production Co.	Default	Temp. Spacing
129-2012	Fidelity Exploration & Production Co.	Default	Temp. Spacing
130-2012	Fidelity Exploration & Production Co.	Default	Temp. Spacing
131-2012	Fidelity Exploration & Production Co.	Default	Temp. Spacing
132-2012	Fidelity Exploration & Production Co.	Default	Temp. Spacing
133-2012	Fidelity Exploration & Production Co.	Default	Temp. Spacing
134-2012	Fidelity Exploration & Production Co.	Default	Temp. Spacing
135-2012	Fidelity Exploration & Production Co.	Default	Temp. Spacing
136-2012	Fidelity Exploration & Production Co.	Default	Temp. Spacing
137-2012	Fidelity Exploration & Production Co.	Default	Temp. Spacing
138-2012	Fidelity Exploration & Production Co.	Default	Temp. Spacing
139-2012	Fidelity Exploration & Production Co.	Default	Temp. Spacing
140-2012	Fidelity Exploration & Production Co.	Default	Temp. Spacing
141-2012	Fidelity Exploration & Production Co.	Default	Temp. Spacing
142-2012	Fidelity Exploration & Production Co.	Default	Temp. Spacing
143-2012	Fidelity Exploration & Production Co.	Default	Temp. Spacing
144-2012	Fidelity Exploration & Production Co.	Default	Temp. Spacing
145-2012	Fidelity Exploration & Production Co.	Default	Temp. Spacing
146-2012	Fidelity Exploration & Production Co.	Default	Temp. Spacing
147-2012	Fidelity Exploration & Production Co.	Default	Temp. Spacing
148-2012	Fidelity Exploration & Production Co.	Default	Temp. Spacing
149-2012	Fidelity Exploration & Production Co.	Default	Temp. Spacing
150-2012	Fidelity Exploration & Production Co.	Default	Temp. Spacing
151-2012	Fidelity Exploration & Production Co.	Default	Temp. Spacing
161-2012	Continental Resources Inc	Default	Temp. Spacing
176-2012	Continental Resources Inc	Default	Well Density
186-2012	Cirque Resources LP	Default	Temp. Spacing
187-2012	Cirque Resources LP	Default	Temp. Spacing
188-2012	Cirque Resources LP	Default	Temp. Spacing
189-2012	Cirque Resources LP	Default	Temp. Spacing
190-2012	Cirque Resources LP	Default	Temp. Spacing

DEFAULT DOCKET LIST, 4/26/2012

194-2012	Slawson Exploration Company Inc	Default	Temp. Spacing
195-2012	Slawson Exploration Company Inc	Default	Temp. Spacing
196-2012	Slawson Exploration Company Inc	Default	Temp. Spacing
199-2012	Slawson Exploration Company Inc	Default	Temp. Spacing
200-2012	Slawson Exploration Company Inc	Default	Temp. Spacing
201-2012	Slawson Exploration Company Inc	Default	Temp. Spacing
202-2012	Slawson Exploration Company Inc	Default	Temp. Spacing
203-2012	Slawson Exploration Company Inc	Default	Well Density
204-2012	Slawson Exploration Company Inc	Default	Well Density
216-2012	Keesun Corporation	Default	Exception - Drilling
218-2012	BOH Inc.	Default	Class II Permit
219-2012	BOH Inc.	Default	Class II Permit
220-2012	BOH Inc.	Default	Class II Permit
221-2012	Central Montana Resources, LLC	Default	Temp. Spacing
222-2012	Central Montana Resources, LLC	Default	Temp. Spacing
223-2012	Cornerstone Natural Resources LLC	Default	Temp. Spacing
224-2012	Cornerstone Natural Resources LLC	Default	Temp. Spacing
225-2012	Cornerstone Natural Resources LLC	Default	Temp. Spacing
227-2012	Oasis Petroleum, Inc.	Default	Well Density
228-2012	Oasis Petroleum, Inc.	Default	Well Density
229-2012	Oasis Petroleum, Inc.	Default	Spacing Amendment
240-2012	Shakespeare Oil Co Inc	Default	Vacate Field/Rule
240-2012	Shakespeare Oil Co Inc	Default	Temp. Spacing
479-2011	Triangle Petroleum Corporation	Default	Vacate Field/Rule
479-2011	Triangle Petroleum Corporation	Default	Temp. Spacing
31-2012	Oasis Petroleum, Inc.	Default	Spacing Amendment
39-2012	Slawson Exploration Company Inc	Default	Temp. Spacing
90-2012	Sands Oil Company	Default	Well Density
92-2012	Shadwell Resources Group, LLC	Default	Class II Permit

DOCKETS TO HEAR, 4/26/2012

EXHIBIT 7

Docket	Applicant	Status	Request
++ One or more protested Fidelity Applications ++			
162-2012	Continental Resources Inc		Spacing
170-2012	Continental Resources Inc		Pooling
177-2012	Continental Resources Inc		Well Density
163-2012	Continental Resources Inc		Spacing
171-2012	Continental Resources Inc		Pooling
178-2012	Continental Resources Inc		Well Density
164-2012	Continental Resources Inc		Spacing
179-2012	Continental Resources Inc		Well Density
165-2012	Continental Resources Inc		Spacing
180-2012	Continental Resources Inc		Well Density
166-2012	Continental Resources Inc		Spacing
172-2012	Continental Resources Inc		Pooling
181-2012	Continental Resources Inc		Well Density
167-2012	Continental Resources Inc		Spacing
173-2012	Continental Resources Inc		Pooling
182-2012	Continental Resources Inc		Well Density
168-2012	Continental Resources Inc		Spacing
174-2012	Continental Resources Inc		Pooling
183-2012	Continental Resources Inc		Well Density
169-2012	Continental Resources Inc		Spacing
175-2012	Continental Resources Inc		Pooling
184-2012	Continental Resources Inc		Well Density
97-2012	Continental Resources Inc	Protested	Temp. Spacing
160-2012	Continental Resources Inc		Temp. Spacing
357-2011	Continental Resources Inc		Temp. Spacing
185-2012	Continental Resources Inc		Spacing Amendment
99-2012	Continental Resources Inc		Spacing Amendment
100-2012	Continental Resources Inc		Spacing Amendment
102-2012	Continental Resources Inc		Spacing Amendment

DOCKETS TO HEAR, 4/26/2012

103-2012	Continental Resources Inc	Spacing Amendment
104-2012	Continental Resources Inc	Spacing Amendment
105-2012	Continental Resources Inc	Spacing Amendment
106-2012	Continental Resources Inc	Spacing Amendment
107-2012	Continental Resources Inc	Spacing Amendment
108-2012	Continental Resources Inc	Spacing Amendment
109-2012	Continental Resources Inc	Spacing Amendment
110-2012	Continental Resources Inc	Spacing Amendment
111-2012	Continental Resources Inc	Spacing Amendment
192-2012	Cirque Resources LP	Spacing
193-2012	Cirque Resources LP	Spacing
205-2012	Whiting Oil and Gas Corporation	Temp. Spacing
206-2012	Whiting Oil and Gas Corporation	Temp. Spacing
207-2012	Whiting Oil and Gas Corporation	Spacing
208-2012	Whiting Oil and Gas Corporation	Pooling
209-2012	Whiting Oil and Gas Corporation	Well Density
210-2012	Whiting Oil and Gas Corporation	Well Density
211-2012	Whiting Oil and Gas Corporation	Spacing Amendment
212-2012	Whiting Oil and Gas Corporation	Spacing Amendment
213-2012	Whiting Oil and Gas Corporation	Spacing Amendment
215-2012	Marathon Oil Company	Spacing
217-2012	XTO Energy Inc.	Spacing
226-2012	Oasis Petroleum, Inc.	Temp. Spacing
34-2012	Oasis Petroleum, Inc.	Pooling
35-2012	Oasis Petroleum, Inc.	Pooling
230-2012	Brigham Oil & Gas LP	Spacing Amendment
234-2012	Brigham Oil & Gas LP	Pooling
232-2012	Brigham Oil & Gas LP	Spacing
236-2012	Brigham Oil & Gas LP	Pooling
239-2012	Brigham Oil & Gas LP	Well Density
235-2012	Brigham Oil & Gas LP	Pooling
238-2012	Brigham Oil & Gas LP	Well Density
241-2012	Sagebrush Resources II, LLC	Temp. Spacing
302-2011	G3 Operating, LLC	Well Density

DOCKETS TO HEAR, 4/26/2012

394-2011	TOI Operating		Class II Permit
15-2012	XTO Energy Inc.		Well Density
85-2012	True Oil LLC	Protested	Spacing
112-2012	Central Montana Resources, LLC		Vacate Field/Rule

FULL DOCKET LIST, 4/26/2012

EXHIBIT 8

Docket	Applicant	Status	Request
117-2012	Fidelity Exploration & Production Co.	Default	Temp. Spacing
118-2012	Fidelity Exploration & Production Co.	Default	Temp. Spacing
119-2012	Fidelity Exploration & Production Co.	Default	Temp. Spacing
120-2012	Fidelity Exploration & Production Co.	Default	Temp. Spacing
121-2012	Fidelity Exploration & Production Co.	Default	Temp. Spacing
122-2012	Fidelity Exploration & Production Co.	Withdrawn	Temp. Spacing
123-2012	Fidelity Exploration & Production Co.	Default	Temp. Spacing
124-2012	Fidelity Exploration & Production Co.	Default	Temp. Spacing
125-2012	Fidelity Exploration & Production Co.	Default	Temp. Spacing
126-2012	Fidelity Exploration & Production Co.	Default	Temp. Spacing
127-2012	Fidelity Exploration & Production Co.	Default	Temp. Spacing
128-2012	Fidelity Exploration & Production Co.	Default	Temp. Spacing
129-2012	Fidelity Exploration & Production Co.	Default	Temp. Spacing
130-2012	Fidelity Exploration & Production Co.	Default	Temp. Spacing
131-2012	Fidelity Exploration & Production Co.	Default	Temp. Spacing
132-2012	Fidelity Exploration & Production Co.	Default	Temp. Spacing
133-2012	Fidelity Exploration & Production Co.	Default	Temp. Spacing
134-2012	Fidelity Exploration & Production Co.	Default	Temp. Spacing
135-2012	Fidelity Exploration & Production Co.	Default	Temp. Spacing
136-2012	Fidelity Exploration & Production Co.	Default	Temp. Spacing
137-2012	Fidelity Exploration & Production Co.	Default	Temp. Spacing
138-2012	Fidelity Exploration & Production Co.	Default	Temp. Spacing
139-2012	Fidelity Exploration & Production Co.	Default	Temp. Spacing
140-2012	Fidelity Exploration & Production Co.	Default	Temp. Spacing
141-2012	Fidelity Exploration & Production Co.	Default	Temp. Spacing
142-2012	Fidelity Exploration & Production Co.	Default	Temp. Spacing
143-2012	Fidelity Exploration & Production Co.	Default	Temp. Spacing
144-2012	Fidelity Exploration & Production Co.	Default	Temp. Spacing
145-2012	Fidelity Exploration & Production Co.	Default	Temp. Spacing
146-2012	Fidelity Exploration & Production Co.	Default	Temp. Spacing
147-2012	Fidelity Exploration & Production Co.	Default	Temp. Spacing
148-2012	Fidelity Exploration & Production Co.	Default	Temp. Spacing
149-2012	Fidelity Exploration & Production Co.	Default	Temp. Spacing
150-2012	Fidelity Exploration & Production Co.	Default	Temp. Spacing
151-2012	Fidelity Exploration & Production Co.	Default	Temp. Spacing
152-2012	EOG Resources, Inc.	Continued	Spacing
153-2012	EOG Resources, Inc.	Continued	Spacing
154-2012	EOG Resources, Inc.	Continued	Spacing
155-2012	EOG Resources, Inc.	Continued	Spacing
156-2012	EOG Resources, Inc.	Continued	Spacing
157-2012	EOG Resources, Inc.	Continued	Spacing
158-2012	EOG Resources, Inc.	Continued	Spacing
159-2012	EOG Resources, Inc.	Continued	Spacing
160-2012	Continental Resources Inc		Temp. Spacing

FULL DOCKET LIST, 4/26/2012

161-2012	Continental Resources Inc	Default	Temp. Spacing
162-2012	Continental Resources Inc		Spacing
163-2012	Continental Resources Inc		Spacing
164-2012	Continental Resources Inc		Spacing
165-2012	Continental Resources Inc		Spacing
166-2012	Continental Resources Inc		Spacing
167-2012	Continental Resources Inc		Spacing
168-2012	Continental Resources Inc		Spacing
169-2012	Continental Resources Inc		Spacing
170-2012	Continental Resources Inc		Pooling
171-2012	Continental Resources Inc		Pooling
172-2012	Continental Resources Inc		Pooling
173-2012	Continental Resources Inc		Pooling
174-2012	Continental Resources Inc		Pooling
175-2012	Continental Resources Inc		Pooling
176-2012	Continental Resources Inc	Default	Well Density
177-2012	Continental Resources Inc		Well Density
178-2012	Continental Resources Inc		Well Density
179-2012	Continental Resources Inc		Well Density
180-2012	Continental Resources Inc		Well Density
181-2012	Continental Resources Inc		Well Density
182-2012	Continental Resources Inc		Well Density
183-2012	Continental Resources Inc		Well Density
184-2012	Continental Resources Inc		Well Density
185-2012	Continental Resources Inc		Spacing Amendment
186-2012	Cirque Resources LP	Default	Temp. Spacing
187-2012	Cirque Resources LP	Default	Temp. Spacing
188-2012	Cirque Resources LP	Default	Temp. Spacing
189-2012	Cirque Resources LP	Default	Temp. Spacing
190-2012	Cirque Resources LP	Default	Temp. Spacing
191-2012	Cirque Resources LP	Withdrawn	Temp. Spacing
192-2012	Cirque Resources LP		Spacing
193-2012	Cirque Resources LP		Spacing
194-2012	Slawson Exploration Company Inc	Default	Temp. Spacing
195-2012	Slawson Exploration Company Inc	Default	Temp. Spacing
196-2012	Slawson Exploration Company Inc	Default	Temp. Spacing
197-2012	Slawson Exploration Company Inc	Withdrawn	Temp. Spacing
198-2012	Slawson Exploration Company Inc	Continued	Temp. Spacing
199-2012	Slawson Exploration Company Inc	Default	Temp. Spacing
200-2012	Slawson Exploration Company Inc	Default	Temp. Spacing
201-2012	Slawson Exploration Company Inc	Default	Temp. Spacing
202-2012	Slawson Exploration Company Inc	Default	Temp. Spacing
203-2012	Slawson Exploration Company Inc	Default	Well Density
204-2012	Slawson Exploration Company Inc	Default	Well Density
205-2012	Whiting Oil and Gas Corporation		Temp. Spacing

FULL DOCKET LIST, 4/26/2012

206-2012	Whiting Oil and Gas Corporation		Temp. Spacing
207-2012	Whiting Oil and Gas Corporation		Spacing
208-2012	Whiting Oil and Gas Corporation		Pooling
209-2012	Whiting Oil and Gas Corporation		Well Density
210-2012	Whiting Oil and Gas Corporation		Well Density
211-2012	Whiting Oil and Gas Corporation		Spacing Amendment
212-2012	Whiting Oil and Gas Corporation		Spacing Amendment
213-2012	Whiting Oil and Gas Corporation		Spacing Amendment
214-2012	Whiting Oil and Gas Corporation	Withdrawn	Spacing Amendment
215-2012	Marathon Oil Company		Spacing
216-2012	Keesun Corporation	Default	Exception - Drilling
217-2012	XTO Energy Inc.		Spacing
218-2012	BOH Inc.	Default	Class II Permit
219-2012	BOH Inc.	Default	Class II Permit
220-2012	BOH Inc.	Default	Class II Permit
221-2012	Central Montana Resources, LLC	Default	Temp. Spacing
222-2012	Central Montana Resources, LLC	Default	Temp. Spacing
223-2012	Cornerstone Natural Resources LLC	Default	Temp. Spacing
224-2012	Cornerstone Natural Resources LLC	Default	Temp. Spacing
225-2012	Cornerstone Natural Resources LLC	Default	Temp. Spacing
226-2012	Oasis Petroleum, Inc.		Temp. Spacing
227-2012	Oasis Petroleum, Inc.	Default	Well Density
228-2012	Oasis Petroleum, Inc.	Default	Well Density
229-2012	Oasis Petroleum, Inc.	Default	Spacing Amendment
230-2012	Brigham Oil & Gas LP		Spacing Amendment
231-2012	Brigham Oil & Gas LP	Continued	Spacing
232-2012	Brigham Oil & Gas LP		Spacing
233-2012	Brigham Oil & Gas LP	Continued	Pooling
234-2012	Brigham Oil & Gas LP		Pooling
235-2012	Brigham Oil & Gas LP		Pooling
236-2012	Brigham Oil & Gas LP		Pooling
237-2012	Brigham Oil & Gas LP	Continued	Vacate Field/Rule
237-2012	Brigham Oil & Gas LP	Continued	Well Density
238-2012	Brigham Oil & Gas LP		Vacate Field/Rule
238-2012	Brigham Oil & Gas LP		Well Density
239-2012	Brigham Oil & Gas LP		Well Density
240-2012	Shakespeare Oil Co Inc	Default	Vacate Field/Rule
240-2012	Shakespeare Oil Co Inc	Default	Temp. Spacing
241-2012	Sagebrush Resources II, LLC		Temp. Spacing
314-2010	Slawson Exploration Company Inc	Continued	Temp. Spacing
299-2011	Central Montana Resources, LLC	Continued	Spacing
302-2011	G3 Operating, LLC		Well Density
357-2011	Continental Resources Inc		Temp. Spacing
394-2011	TOI Operating		Class II Permit
409-2011	Brigham Oil & Gas LP	Withdrawn	Spacing Amendment

FULL DOCKET LIST, 4/26/2012

410-2011	Brigham Oil & Gas LP	Withdrawn	Spacing Amendment
411-2011	Brigham Oil & Gas LP	Withdrawn	Spacing Amendment
420-2011	Brigham Oil & Gas LP	Withdrawn	Spacing Amendment
426-2011	Brigham Oil & Gas LP	Withdrawn	Temp. Spacing
427-2011	Brigham Oil & Gas LP	Withdrawn	Temp. Spacing
429-2011	Brigham Oil & Gas LP	Withdrawn	Temp. Spacing
432-2011	Brigham Oil & Gas LP	Withdrawn	Temp. Spacing
446-2011	Brigham Oil & Gas LP	Withdrawn	Pooling
479-2011	Triangle Petroleum Corporation	Default	Vacate Field/Rule
479-2011	Triangle Petroleum Corporation	Default	Temp. Spacing
487-2011	Central Montana Resources, LLC	Continued	Temp. Spacing
505-2011	Brigham Oil & Gas LP	Withdrawn	Spacing Amendment
508-2011	Brigham Oil & Gas LP	Withdrawn	Spacing Amendment
552-2011	Decker Operating Company, L.L.C.	Continued	Well Density
561-2011	Oasis Petroleum, Inc.	Withdrawn	Spacing Amendment
15-2012	XTO Energy Inc.		Well Density
31-2012	Oasis Petroleum, Inc.	Default	Spacing Amendment
34-2012	Oasis Petroleum, Inc.		Pooling
35-2012	Oasis Petroleum, Inc.		Pooling
39-2012	Slawson Exploration Company Inc	Default	Temp. Spacing
47-2012	Brigham Oil & Gas LP	Withdrawn	Temp. Spacing
48-2012	Brigham Oil & Gas LP	Withdrawn	Temp. Spacing
49-2012	Brigham Oil & Gas LP	Withdrawn	Temp. Spacing
50-2012	Brigham Oil & Gas LP	Withdrawn	Temp. Spacing
51-2012	Brigham Oil & Gas LP	Withdrawn	Temp. Spacing
52-2012	Brigham Oil & Gas LP	Withdrawn	Temp. Spacing
53-2012	Brigham Oil & Gas LP	Withdrawn	Temp. Spacing
54-2012	Brigham Oil & Gas LP	Withdrawn	Temp. Spacing
85-2012	True Oil LLC		Spacing
89-2012	Highline Exploration, Inc.	Withdrawn	Spacing Amendment
90-2012	Sands Oil Company	Default	Well Density
91-2012	Shadwell Resources Group, LLC	Continued	Class II Permit
92-2012	Shadwell Resources Group, LLC	Default	Class II Permit
97-2012	Continental Resources Inc	Protested	Temp. Spacing
99-2012	Continental Resources Inc		Spacing Amendment
100-2012	Continental Resources Inc		Spacing Amendment
102-2012	Continental Resources Inc		Spacing Amendment
103-2012	Continental Resources Inc		Spacing Amendment
104-2012	Continental Resources Inc		Spacing Amendment
105-2012	Continental Resources Inc		Spacing Amendment
106-2012	Continental Resources Inc		Spacing Amendment
107-2012	Continental Resources Inc		Spacing Amendment
108-2012	Continental Resources Inc		Spacing Amendment
109-2012	Continental Resources Inc		Spacing Amendment
110-2012	Continental Resources Inc		Spacing Amendment

FULL DOCKET LIST, 4/26/2012

111-2012	Continental Resources Inc		Spacing Amendment
112-2012	Central Montana Resources, LLC		Vacate Field/Rule
113-2012	Central Montana Resources, LLC	Continued	Spacing
114-2012	Central Montana Resources, LLC	Continued	Pooling

DEPARTMENT OF NATURAL RESOURCES
AND CONSERVATION
BOARD OF OIL AND GAS CONSERVATION

BRIAN SCHWEITZER, GOVERNOR

OIL AND GAS CONSERVATION DIVISION



STATE OF MONTANA

Somont Oil Company
Attn: Joe Alborano
419 Ferdig Road
Oilmont, MT 59466

4-12-12

RE: Beaupre 2 101-24198 S8 35N 2W, SWSWNW 2387'FNL & 239'FWL
 Beaupre 2X not yet assigned S8 35N 2W, SWSWNW

Dear Mr. Alborano:

The Beaupre 2 well site was moved west of where it was permitted to be without prior notice to the BOGC and drilled at a location that does not conform to K-S Field well spacing setbacks, therefore it appears to be too close to the west side of the SWNW, 40 acre line. It's exact location remains to be determined by survey. I believe it was drilled to +-825 feet at which depth drilling operations were suspended.

The Beaupre 2X well was spud 4-6-12 at a location I believe to be a legal location. I was informed of the spud on 4-10-12 at which time I inspected the well and subsequently found out that it was drilled without having a valid permit to drill for oil from the BOGC. It was drilled to below 725ft per your field personnel at the time of my inspection and operations were then suspended by you on 4-11-12 until you get your permit to drill from the Board.

These matters will be brought to the attention of the Board of Oil & Gas Conservation at their next scheduled business meeting in Butte, MT on 4-25-12 at 2:00pm in Room 128 of the Natural Resource Building on the Montana Tech campus.

Sincerely,

Gary Klotz – Field Supervisor Northern District
BOGC, Shelby Field Office

cc: Steve Sasaki – Chief Field Inspector; BOGC Billings, MT
Somont Oil Co. 16126 Chasemore Dr. Spring, TX 77379

DIVISION OFFICE
1625 ELEVENTH AVENUE
PO BOX 201601
HELENA, MONTANA 59620-1601
(406) 444-6675

TECHNICAL AND
SOUTHERN FIELD OFFICE
2535 ST. JOHNS AVENUE
BILLINGS, MONTANA 59102-4693
(406) 656-0040

NORTHERN FIELD OFFICE
201 MAIN STREET
PO BOX 690
SHELBY, MONTANA 59474-0690
(406) 434-2422

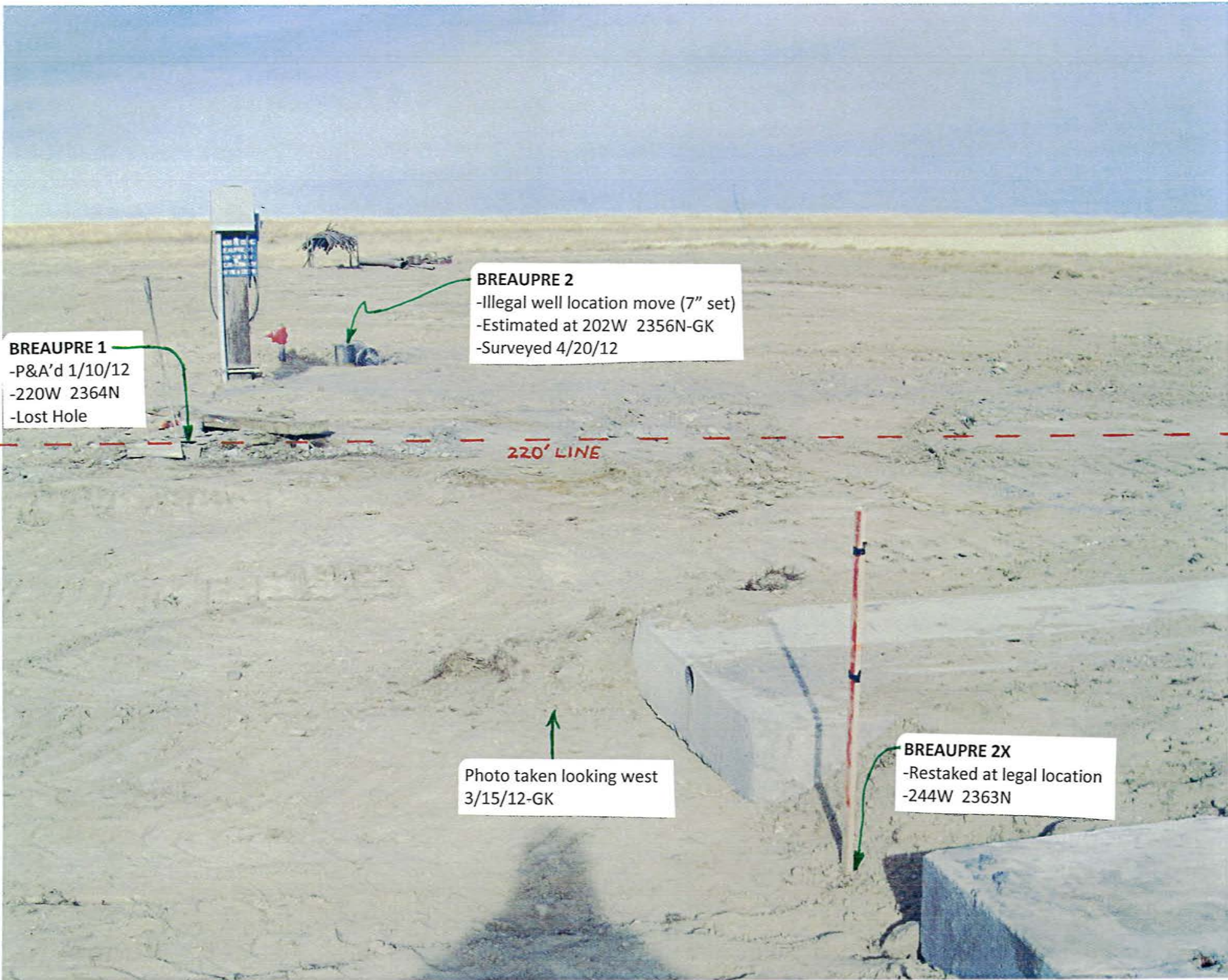
BREAUPRE 1
-P&A'd 1/10/12
-220W 2364N
-Lost Hole

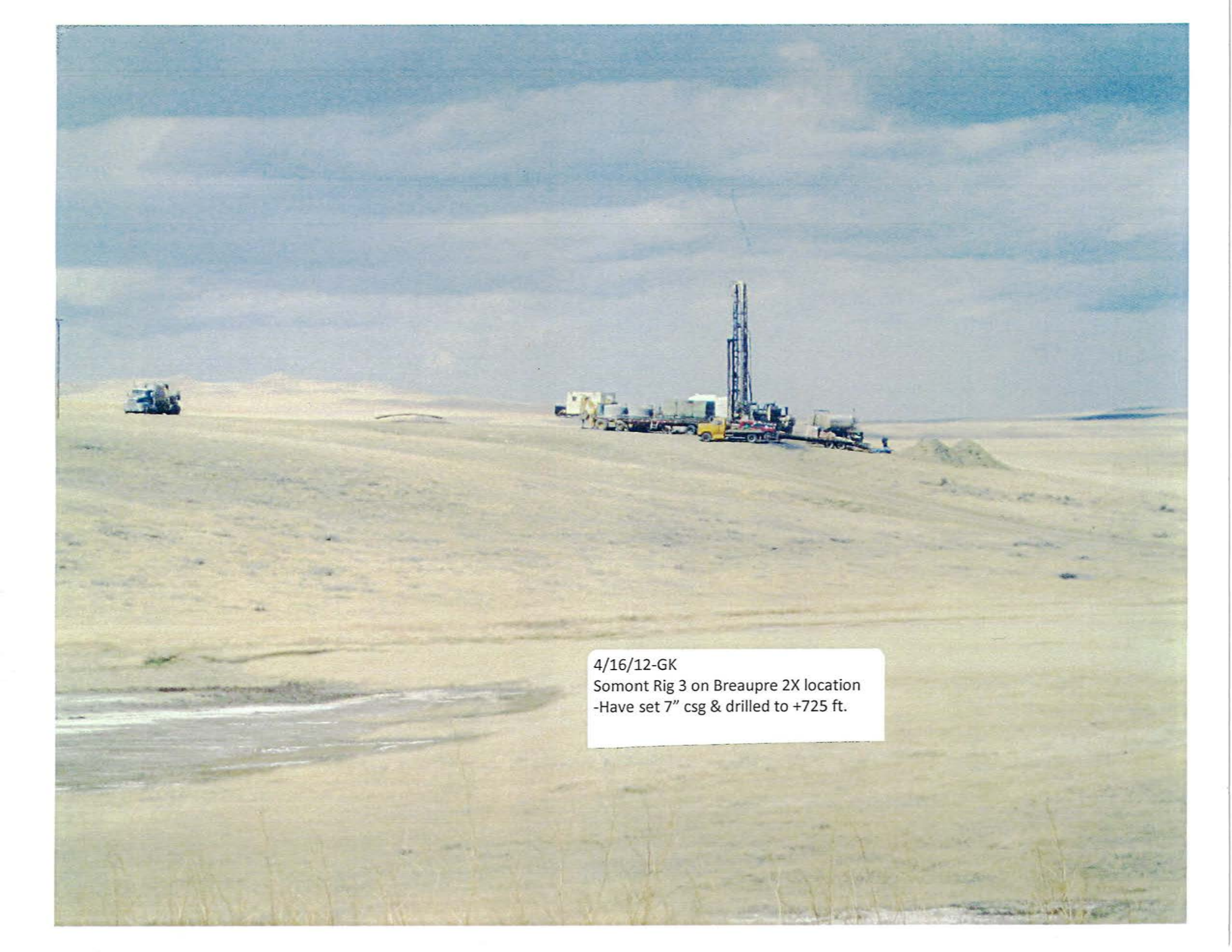
BREAUPRE 2
-Illegal well location move (7" set)
-Estimated at 202W 2356N-GK
-Surveyed 4/20/12

220' LINE

Photo taken looking west
3/15/12-GK

BREAUPRE 2X
-Restaked at legal location
-244W 2363N





4/16/12-GK
Somont Rig 3 on Breapre 2X location
-Have set 7" csg & drilled to +725 ft.

SOMONT OIL COMPANY
Breaupre Lease S8 35N 2W, SWNW

Breaupre #1 220W 2364N

- Lost Hole – P&A'd 1-10-12. Additional top plugging required to complete P&A.

Breaupre #2

- Original replacement well, permitted 8-17-11 @ 239W 2387N.
- Spud 9-27-11, set 7" Sfc csg & drilled to 825ft. BOGC not notified of Sfc cementing
- 11-9-11 Rig broke down and was moved off for repairs per Somont conversations
- Well appeared to be moved west to an illegal location w/o Administrative approval per inspection of BH 11-28-11. Violation of Rule 36.22.602(2).
- 12-2-11 GK verified well was at illegal location. Notified Somont about it and asked Joe Alborano to inform BOGC about what happened. Requested they not resume drilling without BOGC approval. New well site needs resurveyed with sundry filed for location move.
- 3-21-12 Joe Alborano acknowledged well site was moved to an illegal location and said that Somont will plug it.
- 4-20-12 Well site was resurveyed per Joe Alborano. Survey Plat not yet submitted

Breaupre #2X

- 3-15-12 Inspection found that a legal drill location was staked and drilling pits were dug. No rig yet on site. No drill permit issued yet.
- 4-10-12 GK spoke with Glen Thompson of Somont in the field and asked him what their drilling rig was doing. Glen said they spud the new Breaupre well 4-6-12 and had already set Sfc pipe. GK inspected rig3 and found they had air drilled to 725ft
- 4-11-12 SS verified no drill permit had been issued. Notified Joe Alborano of spud without drill permit and Joe shut down the drilling operations until they get a permit. Violation of Rule 36.22.601(1).
- 4-17-12 BOGC issued the drilling permit at legal location. Drilling resumed 4-20-12

Klotz, Gary

From: Somont Oil [somontoil@gmail.com]
Sent: Monday, April 16, 2012 4:01 PM
To: Sasaki, Steve; Klotz, Gary; bhalberson@mt.gov
Subject: Beupre Saga
Attachments: illegal location mbog letter.pdf

Importance: High

Steve, Gary, and Bill:

This is in response to Gary Klotz's attached letter of 12 April on the Beupre matter. I do understand that this will be brought to the attention of the MBOG at their next scheduled business meeting on Wednesday afternoon, 25 April, down in Butte and I want to take the opportunity to outline the sequence of events as we now know them, for better or worse, since it really gets confusing.....it took me the better part of the last couple of days to figure things out to the extent that I now have. Joe Alborano will attend the meeting to answer any questions that the Board might have and fall on his sword as you deem appropriate.

- In October of 2011 we started what we believed to be the Beupre 2 well per Gary Klotz's letter. Our rig is a rubber tired converted I-R Rig originally used for drilling water wells and so we can simply drive onto the location and rig up with virtually no site preparation work required. I have not been to the location but now understand that what happened is that when the crew saw the stake it was on some poor terrain and so they basically turned the rig around and drilled from the other end which put the spudded well about 30' from the surveyed location. Joe Alborano, our vice-president of operations, did not know this had happened and I did not know this had happened but it did happen and was Somont's mistake as we are well aware that wells are to be drilled where the survey stake is located. What made this situation worse was that the altered location placed the well location too close to the quarter-quarter line which made it an illegal location.
- After drilling to about 825' the rig got pulled off because a well bore plugged in the 1920's start leaking at our waterflood (FSFU) and so we went to the FSFU and started trying to reenter the well so that it could either be completed as a producer or injector or plugged. Shortly after starting that, a second old plugged well at the FSFU started leaking and about the same time the top head drive on our rig failed and we learned that the top head drive we had was for shallow water wells and was never intended for drilling deeper holes. So we ordered the proper top head drive, got it, installed it, and then finally fought our way down on the two leaking FSFU area wells – one of which was apparently plugged using at least two telephone poles worth of wood. At some point in time while we were struggling with the leaking FSFU wells Bill Halverson visited the Beupre location and checked it with his GPS and noted it was not only inconsistent with the survey plat but was also an illegal location in that it was too close to the quarter-quarter section line. Bill called this to the attention of our rig superintendent, Glenn Thompson. Glenn does not recall if he passed this message on to Joe but in any case, either Joe did not get the message or, if he did, it did not register.
- A couple of weeks ago we finally got the two leaking FSFU wells safely captured and were able to cement casing in both of them.

his GPS, and when comparing it to the re-staked location by John Cicon, it is clear that the second location is in fact a legal location **even though it is not located where the original well was permitted**. Therefore, it is our intention is to have the second location surveyed in and make that the Beaupre 2X well. This means that the re-staked location of the original well will not be drilled.

So that's what happened. We are virtually certain that we will never make this particular series of mistakes again but, unfortunately, we will undoubtedly make different mistakes in the future. But none of them have been or will be with any malice or forethought or for the purpose of getting any sort of commercial benefit since it is a primary objective of our company to fully comply with all regulatory body rules – including the MBOG – since that makes our life much easier as well.

Herk Jansky